

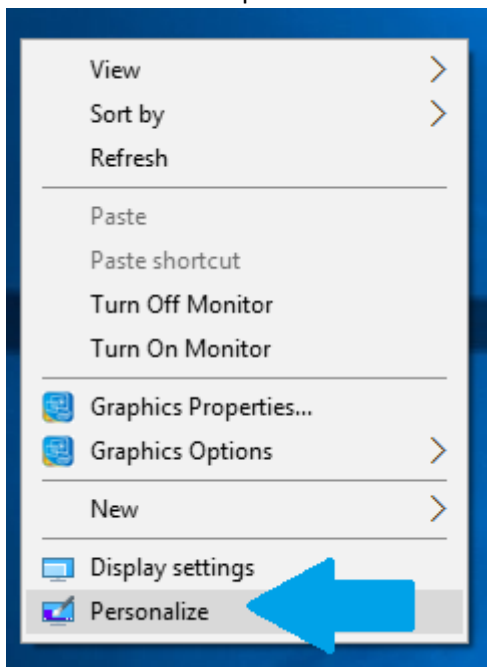
# How to Change Screensaver in Windows 10

**Windows 10** provides 6 Screensavers by default. It is a good practise to set a Screensaver if your computer remains idle for a few minutes. The below post describes how to set or **Change Screensaver in Windows 10**.

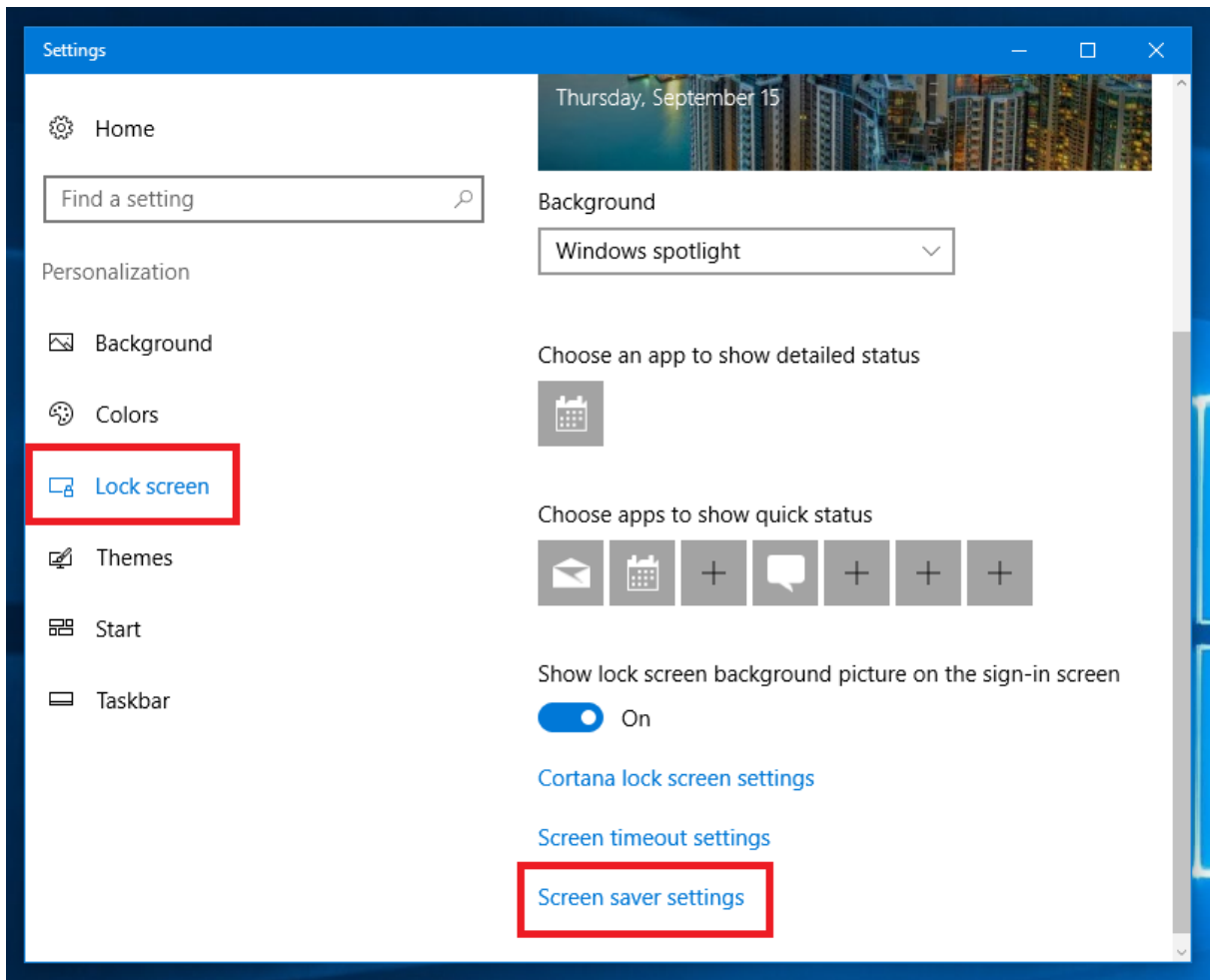
## Change Screensaver in Windows 10

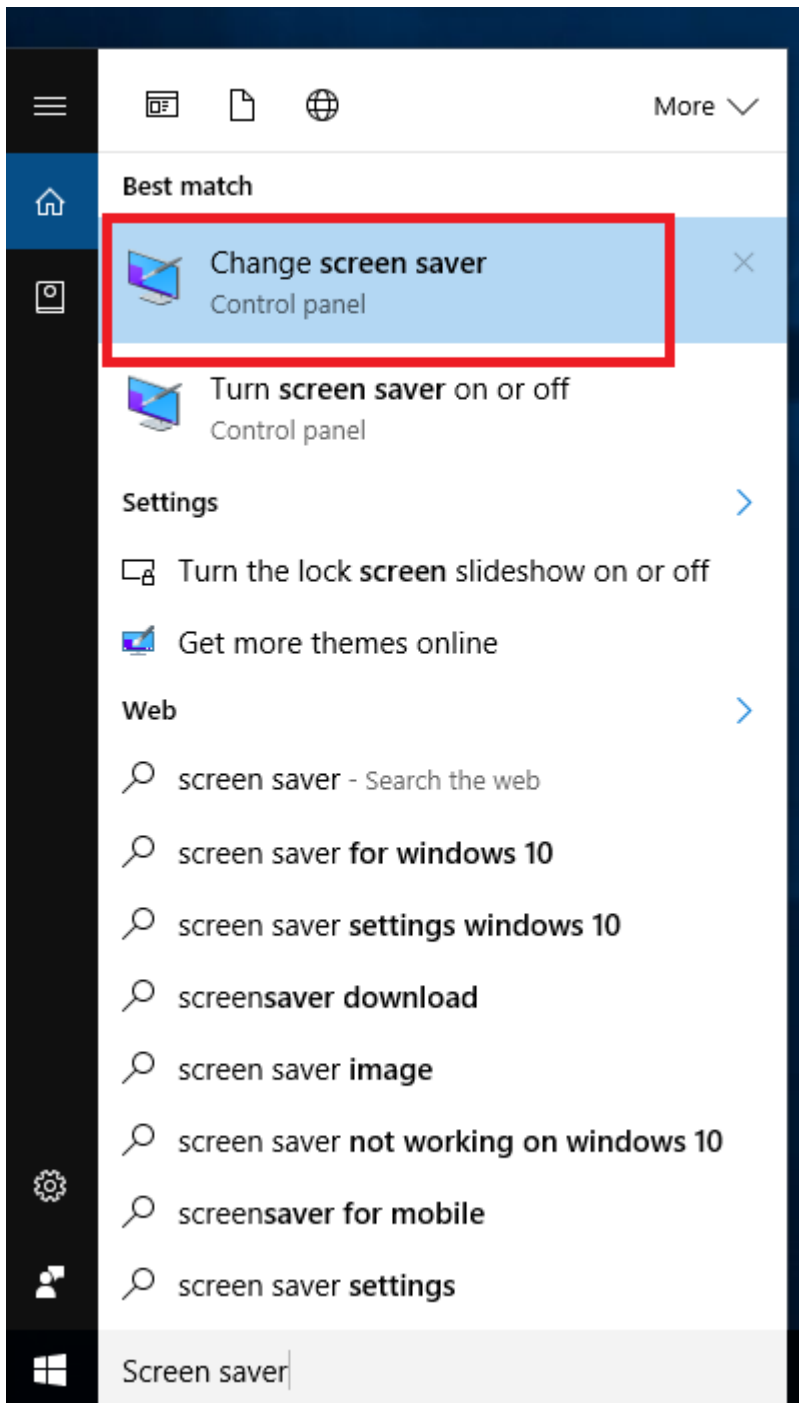
Windows 10 uses the 'Personalise' option to manage all Screensaver Settings. You can set or change the screensaver on your Display Screen by following the below steps

1. Select *Personalize* option from the Desktop right Click Menu.

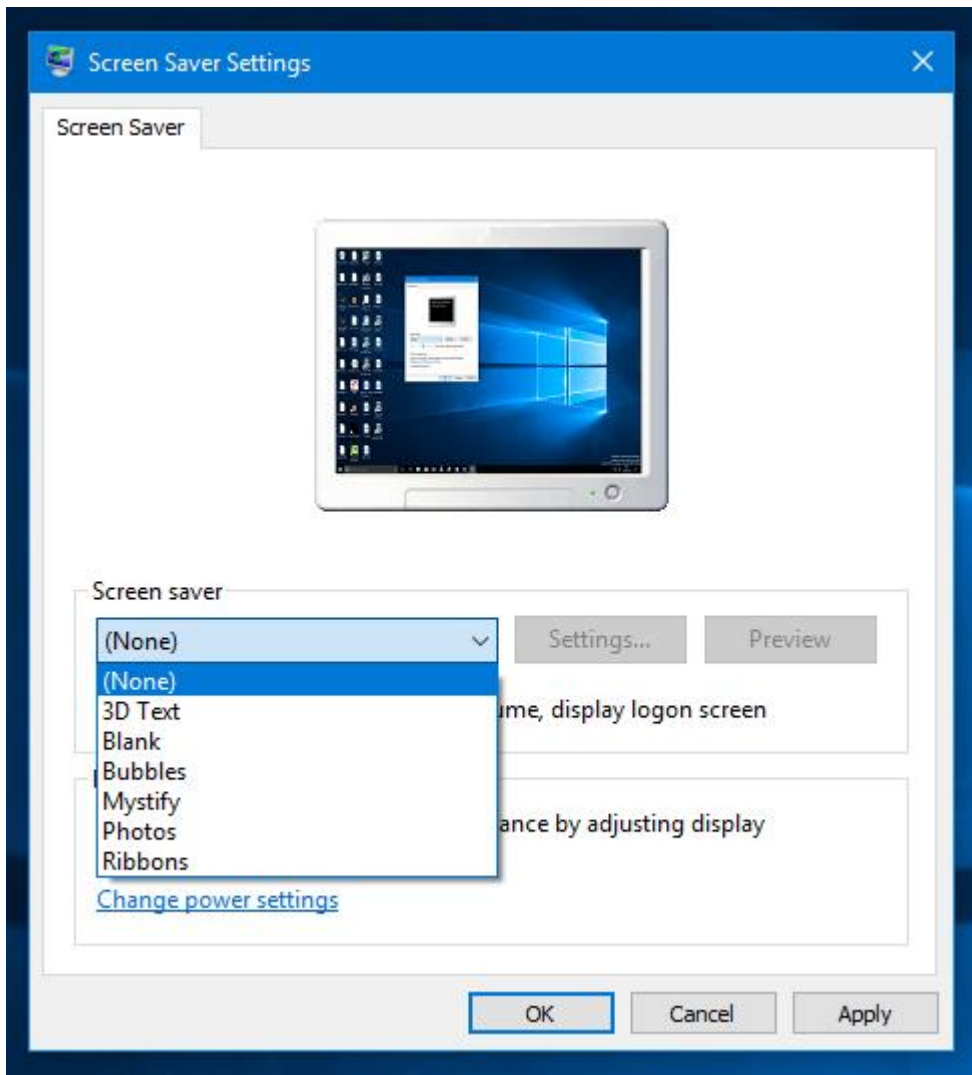


2. The *Settings* Screen is displayed. Select *Lock Screen* Option.
3. The options displayed on the *Lock Screen* has a *Screen Saver Settings* link. Click on the link to access the *Screen Saver Settings*. You can alternatively type 'Screen Saver' in Cortana and select the **Change Screen saver** option displayed to get to the *Screen Saver Settings* Screen.

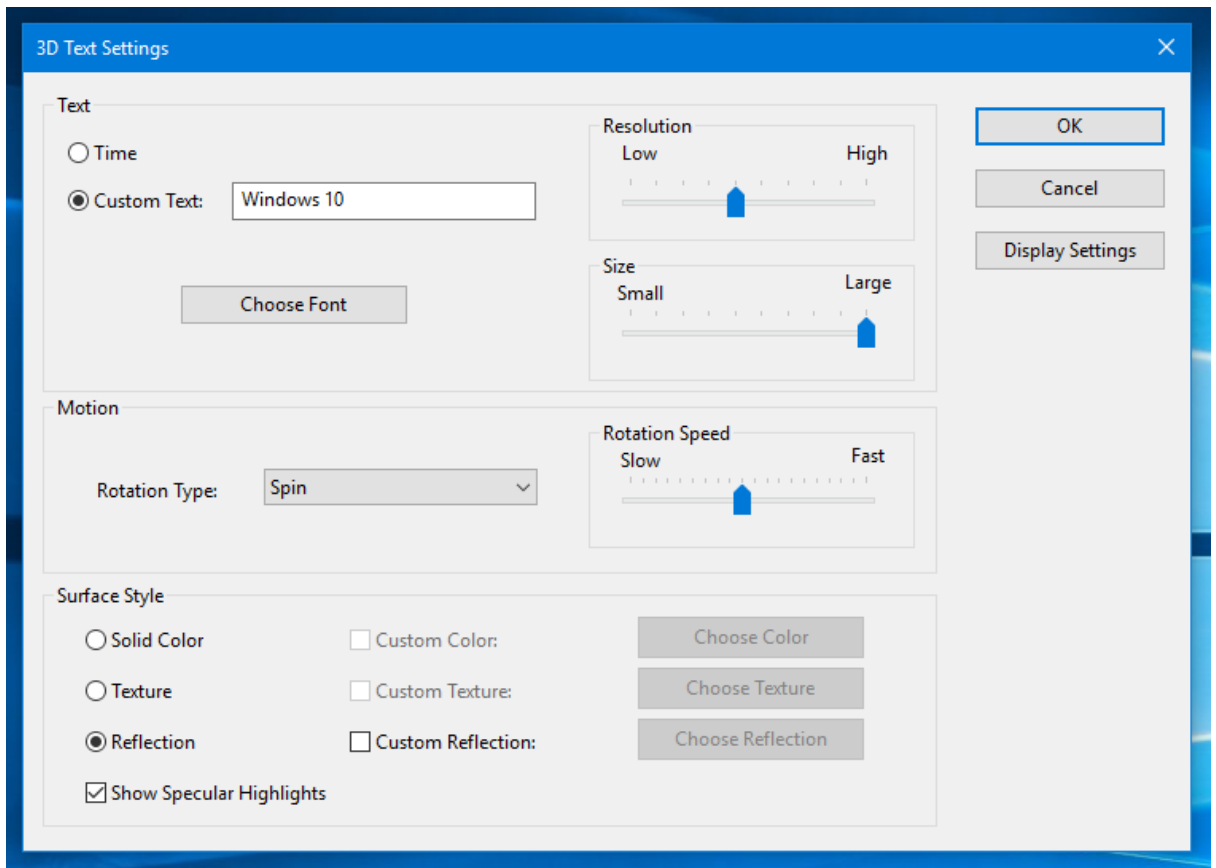




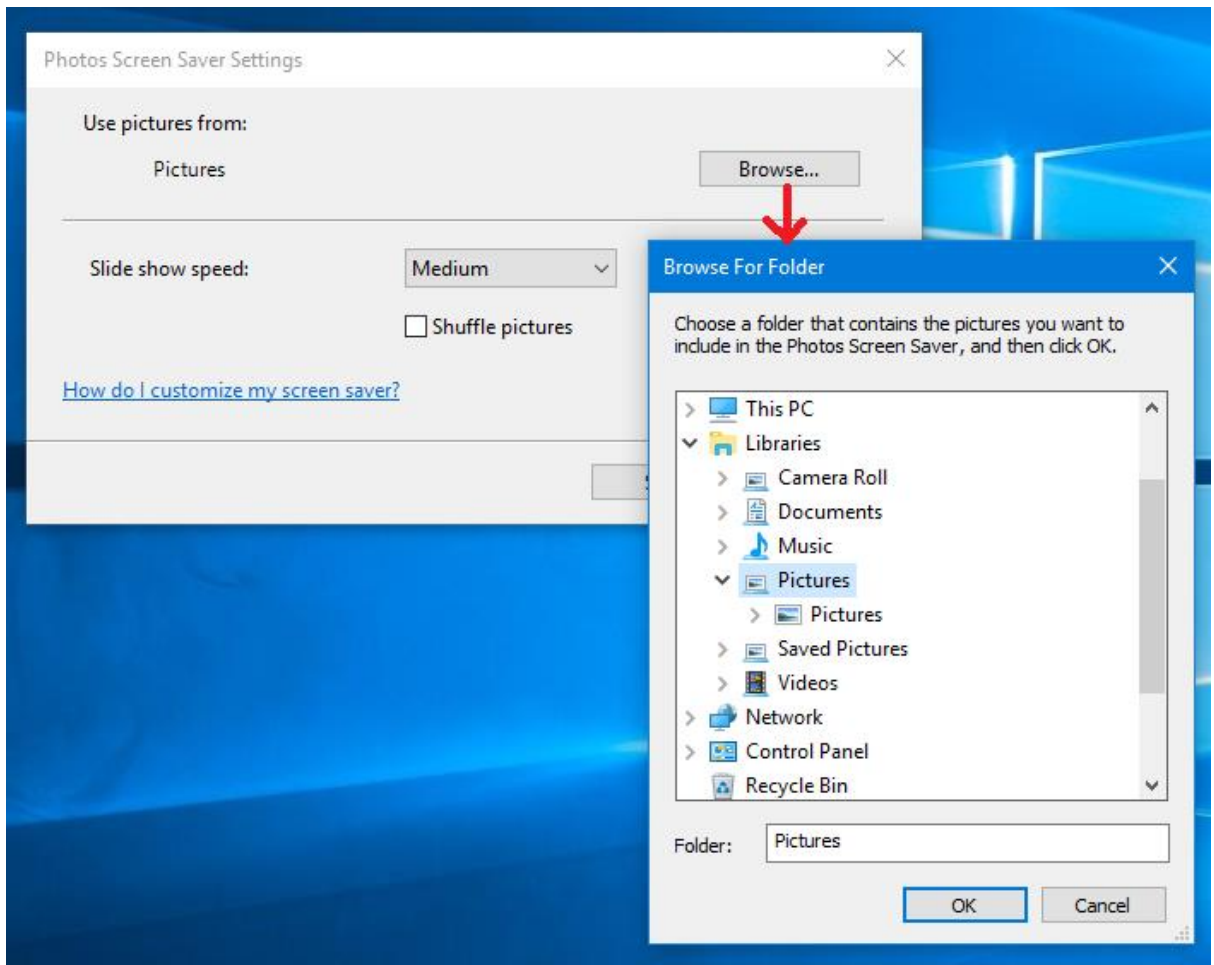
4. The familiar **Screen Saver Settings** Screen will be displayed. You can choose any of the default Screensaver from the drop own list.



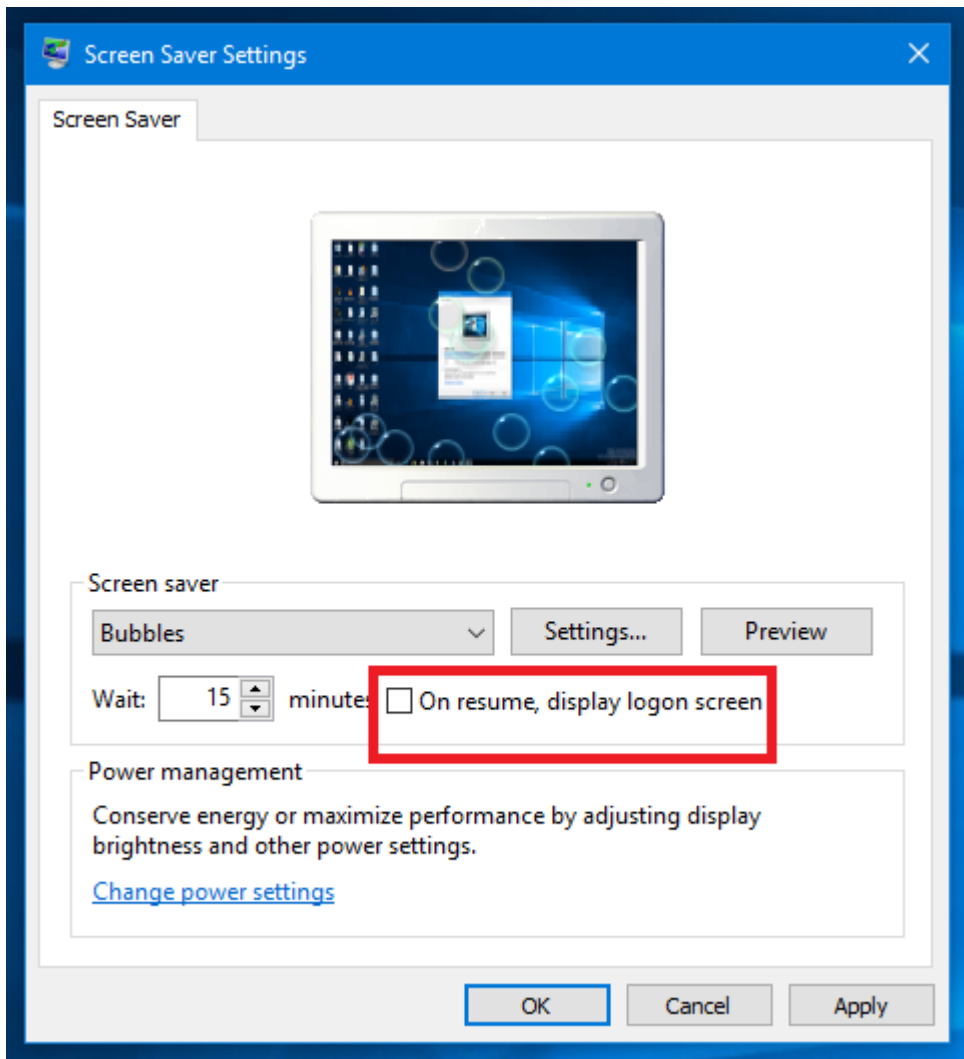
5. Click the *Setting* button if there is any further customisation required by the Screensaver e.g. If you choose the 3 D text Screen saver, then you can change the text as well as other parameters by clicking in the *Settings* button.



The Photos Screensaver allows you to choose the Pictures that you want to appear in your Screensaver.



6. Preview the changes you have made by clicking the *Preview* button and check if the Screensaver is working as per your needs.
7. Set the *Wait* time. The Screensaver will be activated after the Computer is idle for the wait time configured.
8. For security reasons, if you want to enter a password while going back to your Desktop Screen, you can use the *On resume, Display Logon screen* checkbox provided.



9. Once you are happy with the changes you have done, Click the *Apply* and then the *OK* button for the changes to take effect.

To go back to your Desktop, you can provide any kind of User input like Mouse Click or pressing any Keyboard key or touching the screen if the Display is Touchscreen and the desktop will be displayed. The Logon screen will be displayed in case the *On resume, Display Logon screen* option is checked.

## Install Screensavers in Windows 10

Apart from the default Screensavers that Windows 10 offers, many Websites offer various Screensavers .To **download and install Screensaver** from the Website follow the below steps

1. Open your browser and type in Website address which provides Screensavers.
2. Select the Screensaver of your choice. The Website will have a *Download* button. Click on the button to download the Screensaver.
3. The Screensaver will be downloaded in your 'Downloads' folder on your PC.
4. Once downloaded, run the .exe file provided and follow the steps in installation wizard. Make sure that the Screensaver will be installed in the **C/Windows** folder.

5. After successful installation, go to the *Screen Saver Settings* Screen using any of the methods describe above. The new installed Screensaver will be displayed in the *Screen Saver* drop down list. Select the new installed Screensaver from the list.
6. Click on the *Settings* Button, in case there are any further settings to **customise the Screensaver**.
7. Select the '*On resume, display logon screen*' check box if you want to set up a password when you want to go back to your Desktop.
8. Preview the screensaver using the *Preview* button.
9. Click on *Apply* and then *Ok* button for the changes to take effect.

Your new screensaver will be activated and will be displayed when your computer remains idle for the time configured.

Windows 10 hides the Screensaver setting well inside the *Personalize* Menu. You literally need to dig deep into the options to find the Screensaver settings. If you **want change the Screensaver in Windows 10** easily you can use the [TurnOffMonitor](#) Utility. This simple and easy to use utility provides you an option to **change your Screensaver right from your Desktop** with just a single Mouse Click. Using this utility you can also Lock and Switch Off your Monitor if your System remains Idle which not only secures your computer but also saves the Power consumed by the Monitor and reduces your energy bills.